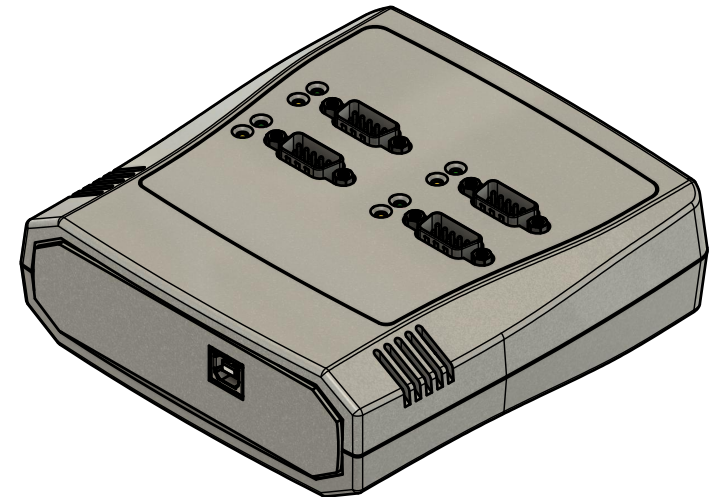
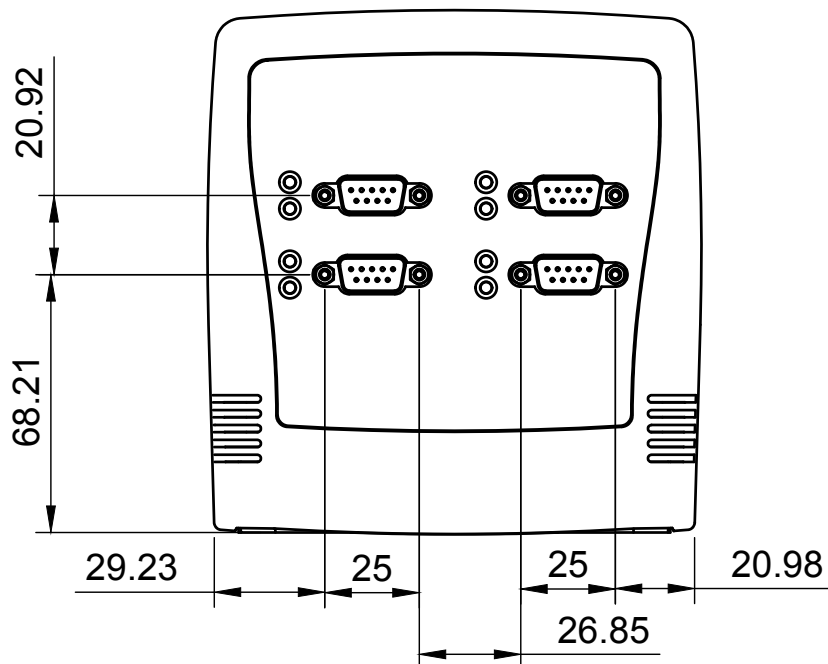
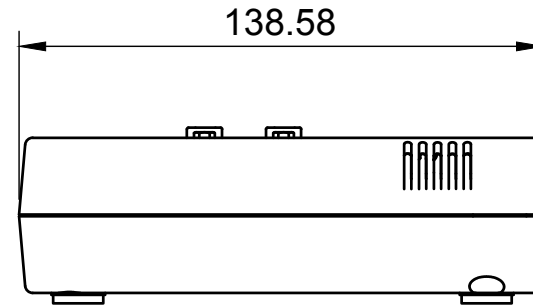
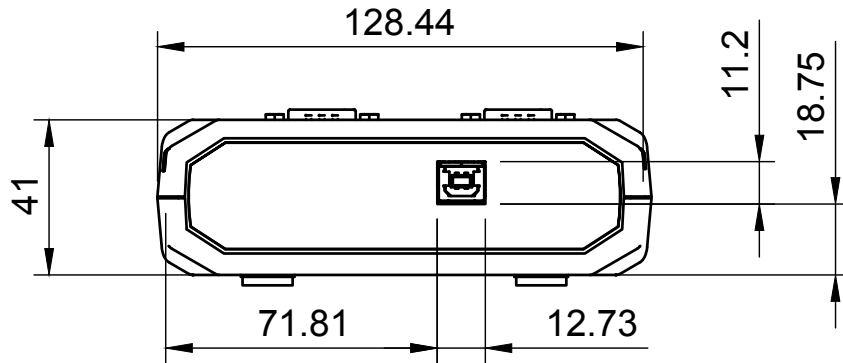

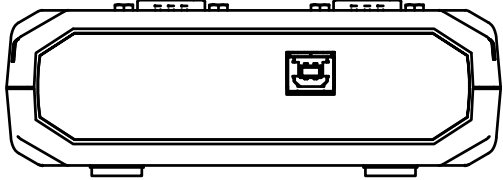
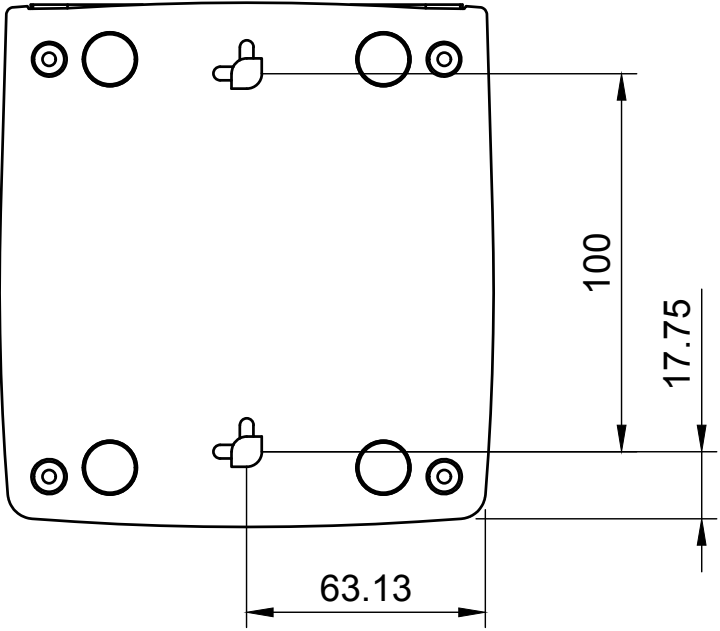



Basic Measurements  
Port Detailed



	Model #: USB-4COM	
	Drawn by: Leo Pinto	Scale: 1:2
Drawn Date: 10/20/21	Tolerance: +/- 0.15mm	
Notes:	Contact: support@coolgear.com	
	Web: coolgear.com	
	A4	1/2

Mounting Holes



	Model #: USB-4COM	
	Drawn by: Leo Pinto	Scale: 1:2
Drawn Date: 10/20/21	Tolerance: +/- 0.15mm	
Notes:	Contact: support@coolgear.com	
	Web: coolgear.com	
	A4	2/2